

SETUP SHEET

Base Model
 F103 F104 F104W

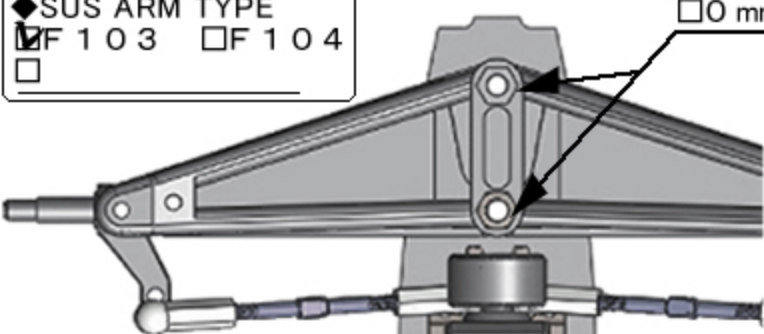
■ Driver / Hiro Nakatani ■ Date / 2012/11/18 ■ Temp / 22 °C ■ Humidity / 41 %

■ Track / SAM Monthly race in Mie 【 Round 11 】 WIN

◆ Location Indoor Outdoor ◆ Size Big Med. Small
 ◆ Road surface Asphalt Carpet ◆ Traction High Med. Low
 ◆ Conditions Smooth Med. Bumpy / Wet

FRONT

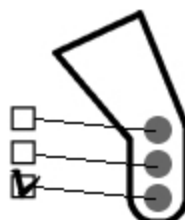
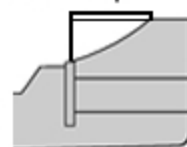
◆ SUS ARM TYPE
 F103 F104



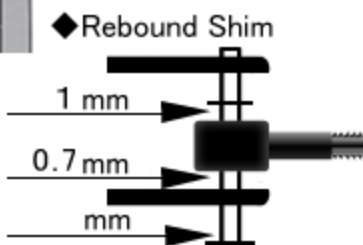
◆ F103 / Camber Spacer
 0 mm 1.0 mm 2.0 mm 3.0 mm 4.0 mm 5.0 mm

■ Front Wing TECH Type-B additional flap

cut bumper-based front 7mm

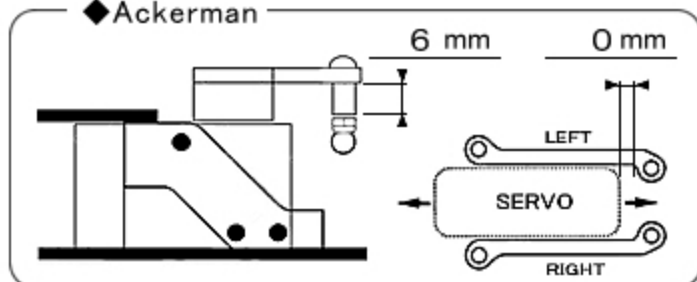


◆ UPRIGHT TYPE
 ■ Maker / Bomber
 InLine
 Trail / 2.4mm



◆ Rebound Shim

◆ Ackerman



◆ Width / 202 mm ◆ Ride Height / 3 mm

◆ Front Spring / HRF033 P-Soft Long

◆ Camber F104
 0° 1.0° 1.5° 2.0° 2.5°

◆ Toe IN OUT / 0.5°

◆ Front Tire / ZEN Hi Rubber 51 mm

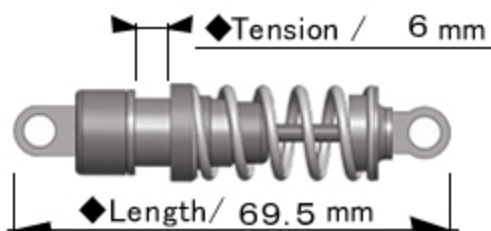
◆ Additive Yes No
 Maker / Mighty V2

Time ~10 min / Width 50 %

◆ Notes

Rear

■ Rear Damper / AE



◆ Spring / Yokomo R12 Silver

◆ Piston / Hole ◆ Oil / # 350

■ Roll-Damper

Oil-Damper Tube-Damper

◆ Length / mm ◆ Oil / # 3000

◆ Width / 200mm ◆ Ride Height / 3.5mm

◆ Height Adapter



◆ Motor mount / HRF025

H.A. Position / Upper Bottom

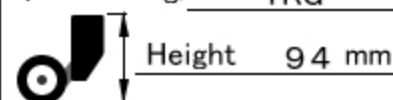
◆ Rear Tire / ZEN Soft 50.5 mm

◆ Additive Yes No
 Maker / Mighty V2

Time ~10 min / Overall width

◆ Body / chevronmodels MARCHI

◆ Rear Wing / TRG



◆ Motor / JET 21.5T

◆ Spur / Pinion / RollOut
 90 T / 34 T / 59.90

◆ ESC / Hobby Wing

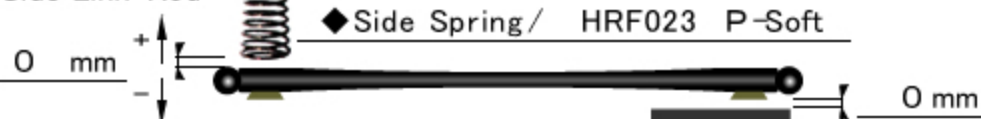
◆ Weight / 1060g

◆ Steering Gyro
 Maker / FUTABA
 ON (GAIN 26 %)

◆ Notes

AVCS Mode
 GAIN uses 3CH of 4PKSR

■ Side Link-Rod



◆ Side Spring / HRF023 P-Soft