

SETUP SHEET

Base Model
 F103 F104 F104W

■ Driver / Hiro Nakatani ■ Date / 2012/11/11 ■ Temp / ■ Humidity / %

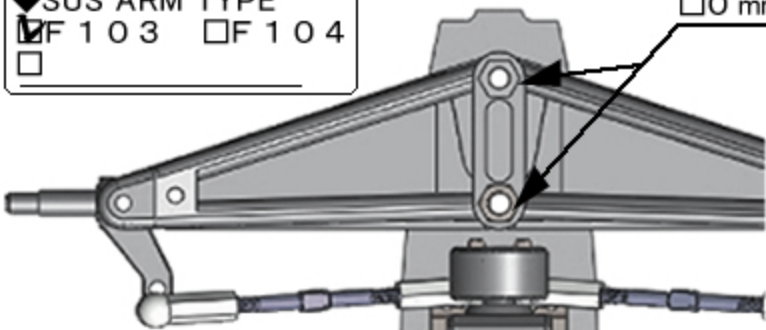
■ Track / Discovery Park in Hong Kong 【 F1RCGP Final Round】

◆ Location Indoor Outdoor ◆ Size Big Med. Small
 ◆ Road surface Asphalt Carpet ◆ Traction High Med. Low
 ◆ Conditions Smooth Med. Bumpy / Wet

FRONT

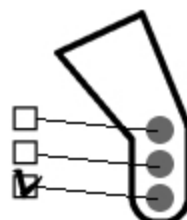
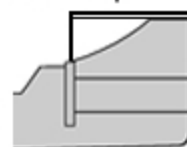
◆ SUS ARM TYPE
 F103 F104

◆ F103 / Camber Spacer
 0 mm 1.0 mm 2.0 mm 3.0 mm 4.0 mm 5.0 mm

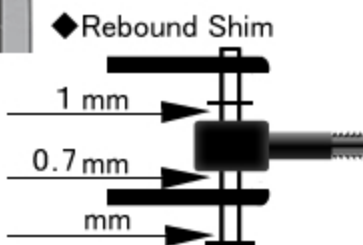


■ Front Wing
 TECH Type-B

cut bumper-based front 7mm



◆ UPRIGHT TYPE
 ■ Maker / Bomber
 InLine
 Trail / 2.4mm



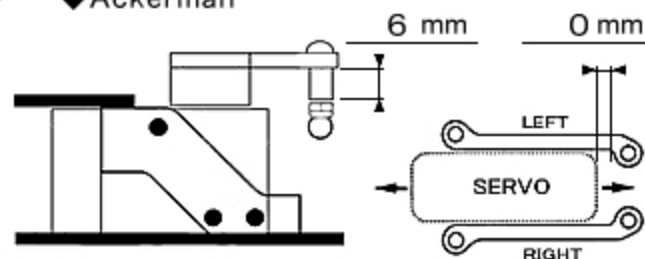
◆ Rebound Shim

1 mm

0.7 mm

mm

◆ Ackerman



6 mm

0 mm

LEFT

SERVO

RIGHT

◆ Width / 200 mm ◆ Ride Height / 5 mm

◆ Front Spring / HRF033 P-Soft Long

◆ Camber F104
 0° 1.0° 1.5° 2.0° 2.5°

◆ Toe IN OUT / 0.5°

◆ Front Tire / ZEN Hi Rubber 55 mm

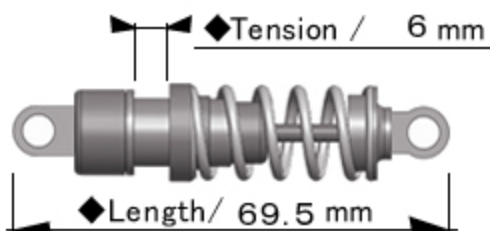
◆ Additive Yes No
 Maker /

Time ~ min / Width mm

◆ Notes

Rear

■ Rear Damper / AE



◆ Tension / 6 mm

◆ Length / 69.5 mm

◆ Spring / Yokomo R12 Silver

◆ Piston / Hole ◆ Oil / # 350

■ Roll-Damper

Oil-Damper Tube-Damper

◆ Length / mm ◆ Oil / # 3000

◆ Width / 200mm ◆ Ride Height / 4.5mm

◆ Height Adapter



◆ Motor mount / HRF025

H.A. Position / Upper Bottom

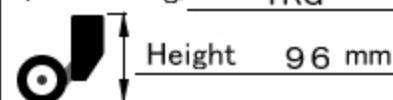
◆ Rear Tire / ZEN Soft 54.5 mm

◆ Additive Yes No
 Maker /

Time ~ min / Width mm

◆ Body / TECH-MG10
 Light weight

◆ Rear Wing / TRG



Height 96 mm

◆ Motor / JET 17.5T

◆ Spur / Pinion / RollOut
 90T / 30T / 57.04

◆ ESC / Hobby Wing

◆ Weight / 1060g

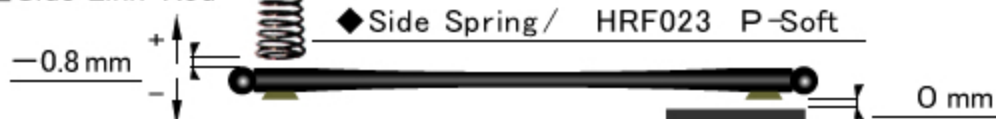
◆ Steering Gyro
 Maker / FUTABA

ON (GAIN 32%)

◆ Notes

GAIN uses 3CH of 4PKSR

■ Side Link-Rod



◆ Side Spring / HRF023 P-Soft

-0.8 mm

0 mm