

## SETUP SHEET

Base Model  
 F103  F104  F104W

■ Driver / Hiro Nakatani    ■ Date / 2012/10/07    ■ Temp / 30 °c    ■ Humidity / %

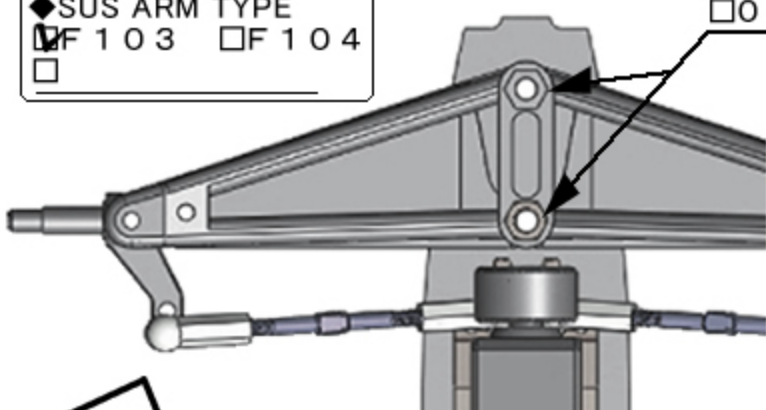
■ Track / PYC Circuit in HONG KONG [F1RCGP-HK Final RD]

◆ Location  Indoor  Outdoor    ◆ Size  Big  Med.  Small  
 ◆ Road surface  Asphalt  Carpet    ◆ Traction  High  Med.  Low  
 ◆ Conditions  Smooth  Med.  Bumpy /  Wet

### FRONT

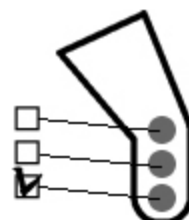
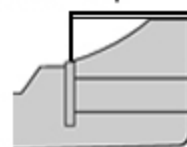
◆ SUS ARM TYPE  
 F103  F104

◆ F103 / Camber Spacer  
 0 mm  1.0 mm  2.0 mm  3.0 mm

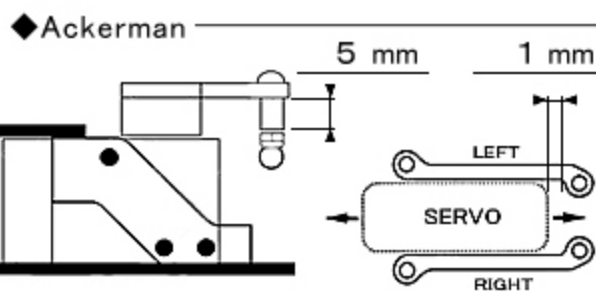


■ Front Wing  
 TECH Type-B    additional flap

cut bumper-based front 7mm



◆ UPRIGHT TYPE  
 ■ Maker / Bomber  
 InLine  Trail / 3.6mm



◆ Width / 200 mm    ◆ Ride Height / 4 mm

◆ Front Spring / HRF024 P-Soft

◆ Camber F104  
 0°  1.0°  1.5°  2.0°  2.5°

◆ Toe  IN  OUT / 0.5°

◆ Front Tire / ZEN Hi-Rubber 54 mm

◆ Additive  Yes  No  
 Maker / Mighty V2

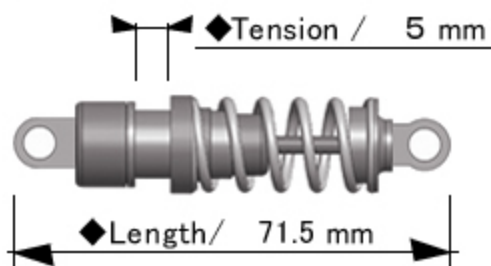
Time ~ 15 min / Width 50%

◆ Notes

Rebound stroke 1mm

### Rear

■ Rear Damper / AE-R5

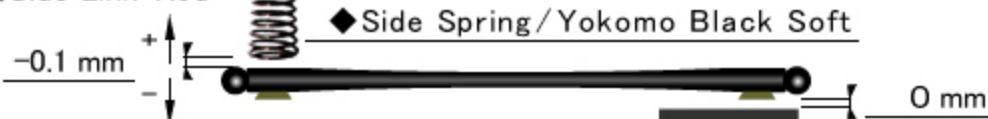


◆ Spring / Yokomo Silver

◆ Piston / Hole    ◆ Oil / # 350

■ Roll-Damper  
 Proto-Type TUBE    ◆ Oil / # 7000

■ Side Link-Rod



◆ Width / 200 mm

◆ Height Adapter



◆ Ride Height / 4.5 mm

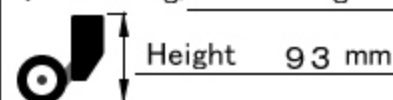
◆ Rear Tire / ZEN Soft25 53.5 mm

◆ Additive  Yes  No  
 Maker / Mighty V2

Time ~ 20 min / Width 100%

◆ Body / Chevron Models MARCH

◆ Rear Wing / 3 Racing



◆ Motor / JET 17.5 T

◆ Spur / Pinion / RollOut  
 90 T / 34 T / 63.46

◆ ESC / Hobby Wing

◆ Weight / 1060 g

◆ Steering Gyro  
 Maker / FUTABA

ON (GAIN +52%)

◆ Notes

GAIN uses 3CH of 4PKS-R