

SETUP SHEET

Base Model
 F103 F104 F104W

■ Driver / Hiro Nakatani ■ Date / 2012/06/27 ■ Temp / 24 °c ■ Humidity / 54 %

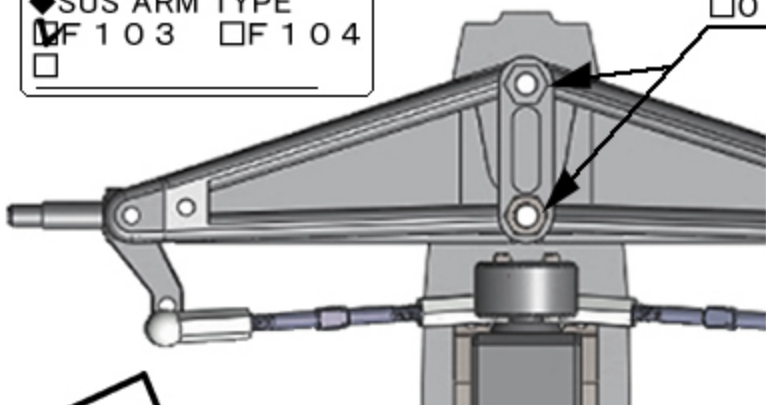
■ Track / **HOTLAP in GIFU 【 TEST 】**

◆ Location Indoor Outdoor ◆ Size Big Med. Small
 ◆ Road surface Asphalt Carpet ◆ Traction High Med. Low
 ◆ Conditions Smooth Med. Bumpy / Wet

FRONT

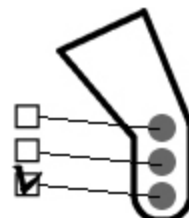
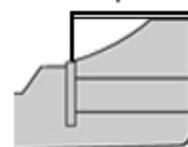
◆ SUS ARM TYPE
 F103 F104

◆ F103 / Camber Spacer
 0 mm 1.0 mm 2.0 mm 3.0 mm



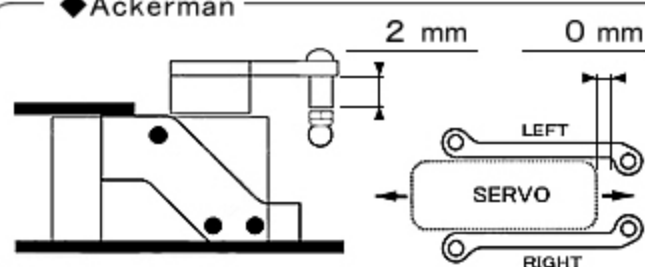
■ Front Wing
 TECH Type-B

cut bumper-based front 7mm



◆ UPRIGHT TYPE
 ■ Maker / Bomber
 InLine Trail / 3.6mm

◆ Ackerman



◆ Width / 200 mm ◆ Ride Height / 2.5 mm

◆ Front Spring / HRF024 P-Soft

◆ Camber F104
 0° 1.0° 1.5° 2.0° 2.5°

◆ Toe IN OUT / 0.5°

◆ Front Tire / ZEN Hi-Rubber 50 mm

◆ Additive Yes No
 Maker /

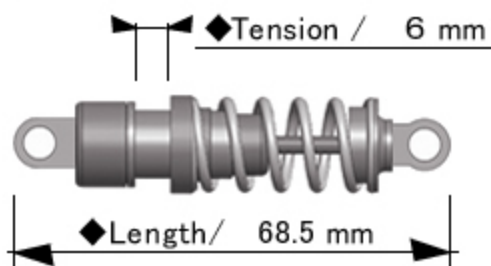
Time ~ min / Width mm

◆ Notes

Put sim 1.2mm under knuckle-arm

Rear

■ Rear Damper / AE-R5

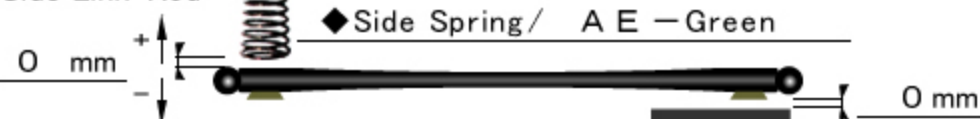


◆ Spring / AE-Gold

◆ Piston / Hole ◆ Oil / # 400

■ Roll-Damper
 ◆ Length / 71.5 mm ◆ Oil / # 150

■ Side Link-Rod



◆ Width / 200 mm

◆ Height Adapter



◆ Ride Height / 3 mm

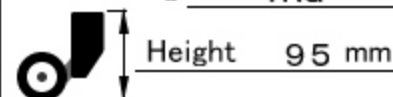
◆ Rear Tire / ZEN Soft25 48 mm

◆ Additive Yes No
 Maker /

Time ~ min / Width

◆ Body / TECH-MG10
 Light weight

◆ Rear Wing / TRG



◆ Motor / JET 17.5T

◆ Spur / Pinion / RollOut
 90T / 35T / 58.61

◆ ESC / Hobby Wing

◆ Weight / g

◆ Steering Gyro
 Maker / R246

ON (GAIN 0 %)

◆ Notes

GAIN uses 3CH of 4PKS