

## SETUP SHEET

Base Model  
 F103  F104  F104W

■ Driver / Hiro Nakatani    ■ Date / 2012/06/03    ■ Temp / 27 °c    ■ Humidity / 52 %

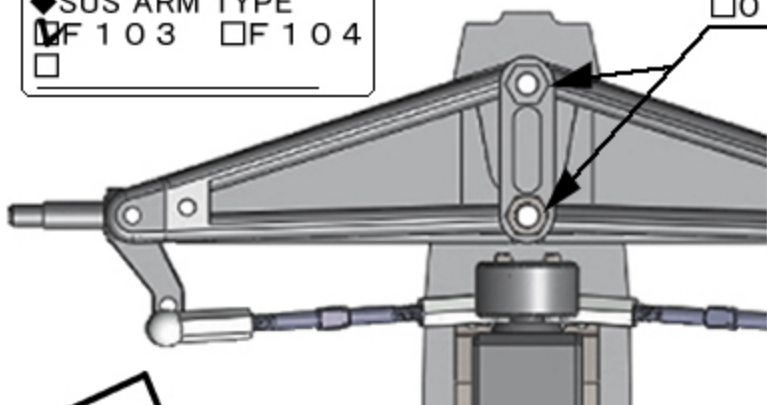
■ Track / RCI in SHANGHAI [F1RCGP Round7]    **TQ & Win**

◆ Location  Indoor  Outdoor    ◆ Size  Big  Med.  Small  
 ◆ Road surface  Asphalt  Carpet    ◆ Traction  High  Med.  Low  
 ◆ Conditions  Smooth  Med.  Bumpy /  Wet

### FRONT

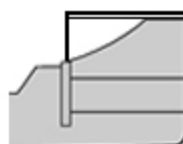
◆ SUS ARM TYPE  
 F103  F104

◆ F103 / Camber Spacer  
 0 mm  1.0 mm  2.0 mm  3.0 mm



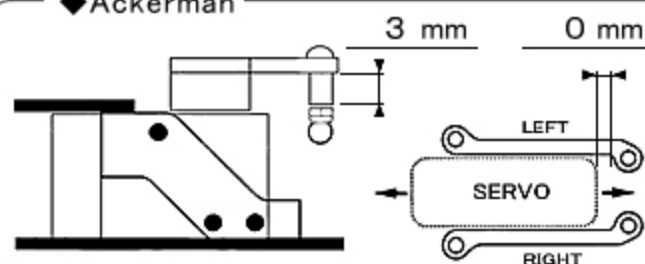
■ Front Wing  
 TECH Type-B

additional flap  
 7mm of front area cuts



◆ UPRIGHT TYPE  
 ■ Maker / Bomber  
 InLine  Trail / 3.6mm

◆ Ackerman



◆ Width / 200 mm    ◆ Ride Height / 4 mm

◆ Front Spring / HRF024 P-Soft

◆ Camber F104  
 0°  1.0°  1.5°  2.0°  2.5°

◆ Toe  IN  OUT / 0°

◆ Front Tire / ZEN Hi-Rubber 54.5mm

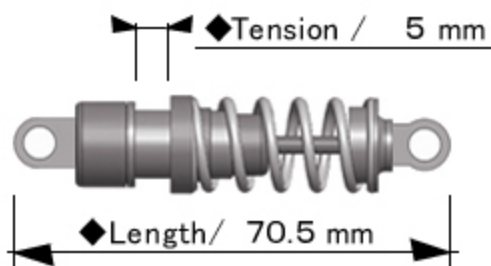
◆ Additive  Yes  No  
 Maker /

Time ~ min / Width mm

◆ Notes

### Rear

■ Rear Damper / AE-R5

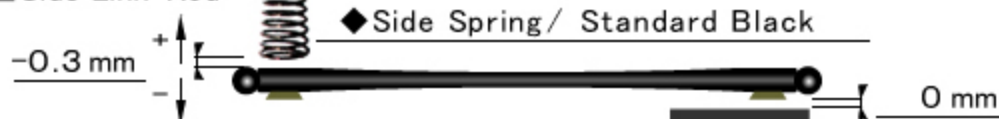


◆ Spring / YOKOMO-R12 Silver

◆ Piston / Hole    ◆ Oil / # 400

■ Roll-Damper  
 ◆ Length / 71.5 mm    ◆ Oil / # 300

■ Side Link-Rod



◆ Width / 200 mm

◆ Height Adapter



◆ Ride Height / 5 mm

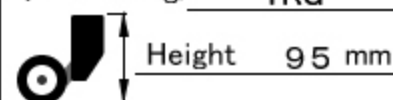
◆ Rear Tire / ZEN Soft25 52 mm

◆ Additive  Yes  No  
 Maker /

Time ~ min / Width

◆ Body / Chevronmodels March

◆ Rear Wing / TRG



◆ Motor / JET 17.5T

◆ Spur / Pinion / RollOut  
 90 T / 34 T / 61.68

◆ ESC / Hobby Wing

◆ Weight / g

◆ Steering Gyro  
 Maker / R246  
 ON (GAIN +7%)

◆ Notes

GAIN uses 3CH of 4PKS