

SETUP SHEET

Base Model
 F103 F104 F104W

■ Driver / Shigeki Morishima ■ Date / 2012/05/13 ■ Temp / 28° ■ Humidity / %

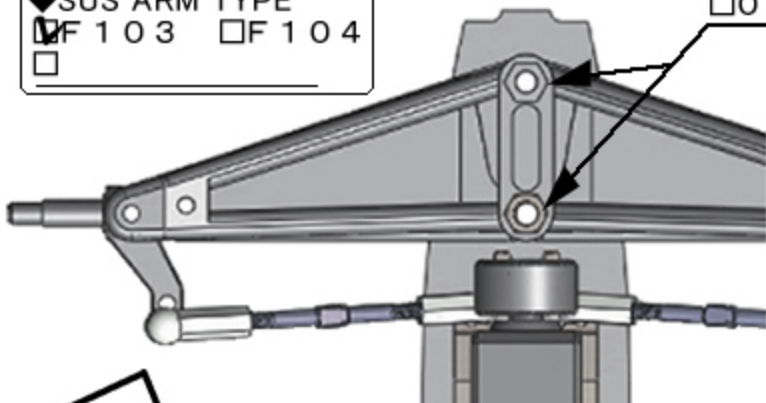
■ Track / FUTASAN CUP in Yatabe **F1 Class TQ&win**

◆ Location Indoor Outdoor ◆ Size Big Med. Small
 ◆ Road surface Asphalt Carpet ◆ Traction High Med. Low
 ◆ Conditions Smooth Med. Bumpy / Wet

FRONT

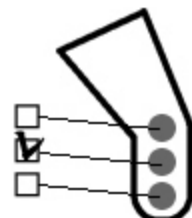
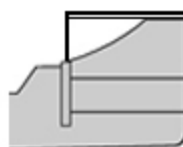
◆ SUS ARM TYPE
 F103 F104

◆ F103 / Camber Spacer
 0 mm 1.0 mm 2.0 mm 3.0 mm

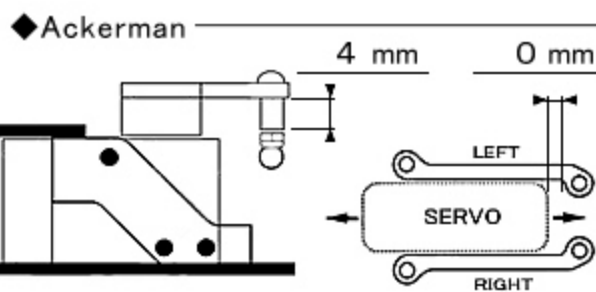


■ Front Wing
 TECH Type-B

An additional flap
 7mm of front area cuts



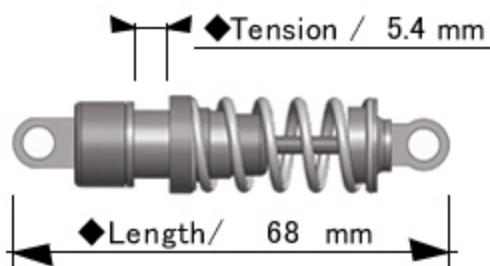
◆ UPRIGHT TYPE
 ■ Maker / Team Bomber
 InLine Trail / 3.6 mm



◆ Width / 200 mm ◆ Ride Height / 4 mm
 ◆ Front Spring / HRF024 / P-soft
 ◆ Camber F104
 0° 1.0° 1.5° 2.0° 2.5°
 ◆ Toe IN OUT / 0°
 ◆ Front Tire / ZEN Hi-Rubber 53 mm
 ◆ Additive Yes No
 Maker / Corally TC2 (control additive)
 Time ~ 30 min / Width 90%
 ◆ Notes

Rear

■ Rear Damper / AE-R5



◆ Spring / AE-Gold
 ◆ Piston / Hole ◆ Oil / # AE35

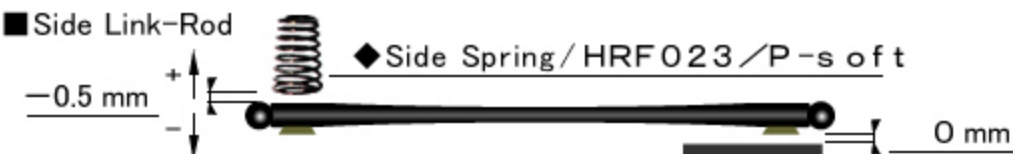
■ Roll-Damper
 ◆ Length / 71.5 mm ◆ Oil / # AE30

◆ Width / 200 mm



◆ Ride Height / 4 mm
 ◆ Rear Tire / ZEN Soft25 52.5 mm
 ◆ Additive Yes No
 Maker / Corally TC2 (control additive)
 Time ~ 30 min / Width 100%

◆ Side Spring / HRF023 / P-soft



◆ Body / chevronmodel / March
 ◆ Rear Wing / TRG
 Height 95 mm
 ◆ Motor / JET-17.5T
 ◆ Spur / Pinion / RollOut
 90 T / 32 T / 58.6
 ◆ ESC / Hobby Wing
 ◆ Weight / 1030 g
 ◆ Steering Gyro
 Maker / R246
 ON (GAIN 0 %)
 ◆ Notes